

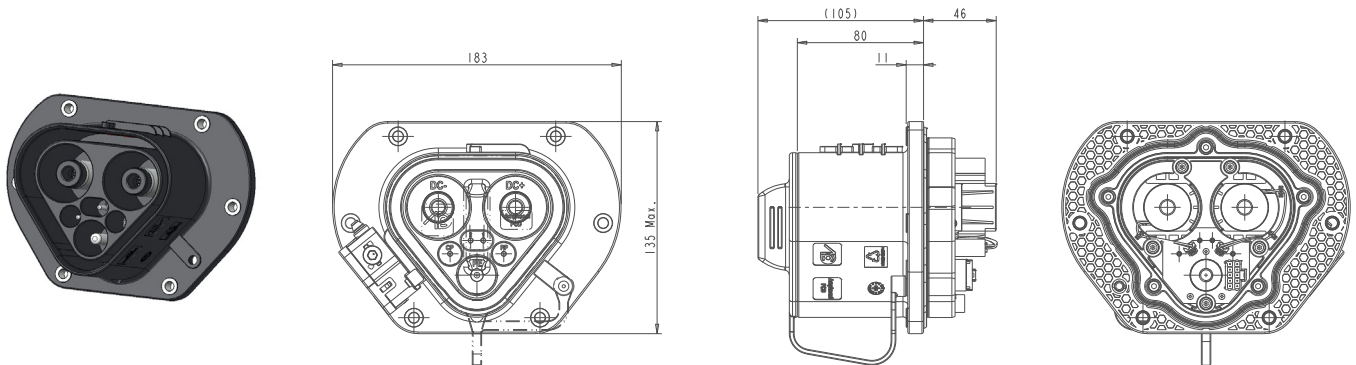
Vehicle connector

Rated voltage:	1250V (DC)
Rated current:	1000A (liquid cooling)
Cable range for power:	35mm ²
Cooling medium:	Propylene Glycol Water or Oil
Waterproof:	IP67
Ambiant temperature:	-30 to 50°C
Durability:	20,000 cycles Min.



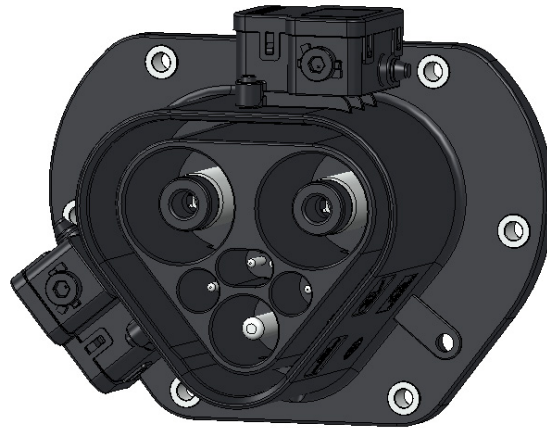
Inlet

Rated voltage:	1250V (DC)
Rated current:	1000A (natural cooling copper bar) 3000A (liquid cooling copper bar)
Recommended copper bars:	≥ 300mm ²
Waterproof:	IP67 (unmated socket)
Installation method:	Front installation
Ambiant temperature:	-30 to 50°C
Insulation Resistance:	200MΩ Min.
Durability:	20,000 cycles Min.
ROHS	Yes



Note: Current data might be subject to change, product drawings shall prevail.

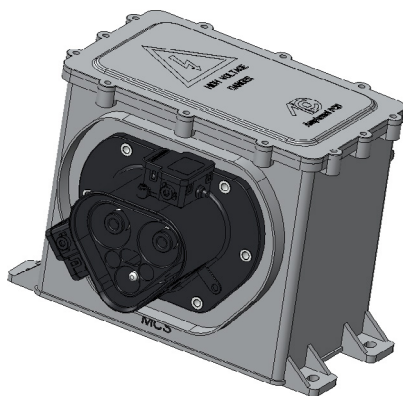
The MCS inlet can support 2 electronic locks



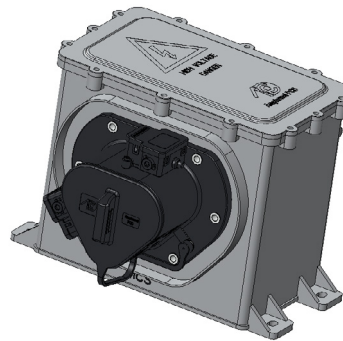
AN INTEGRATED SOLUTION FOR CONVENIENCE

The MCS inlet pre-installed on a PDU

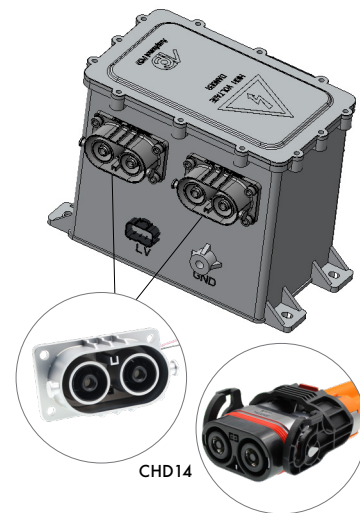
The MCS inlet, while available for purchase independently, can also be combined with an in-house PDU to facilitate its implementation. The PDU will then come with two sets of 150mm² CHD14 connectors installed at its rear.



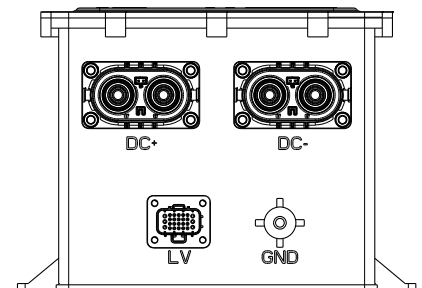
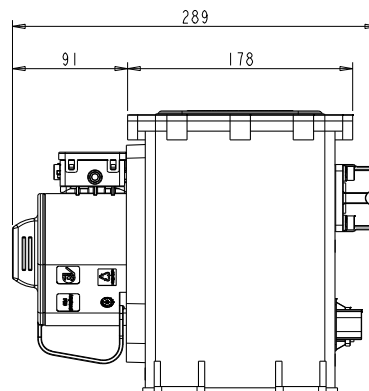
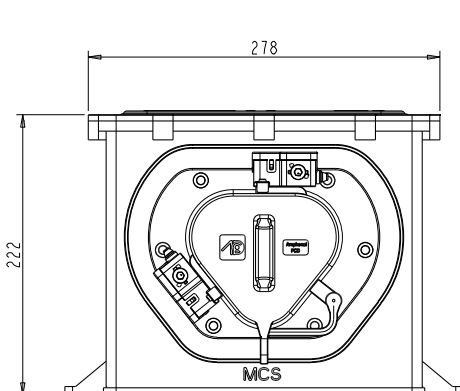
Front view



Rear view



CHD14



To achieve Co²-neutral mobility, we will need electric vehicles of all kind

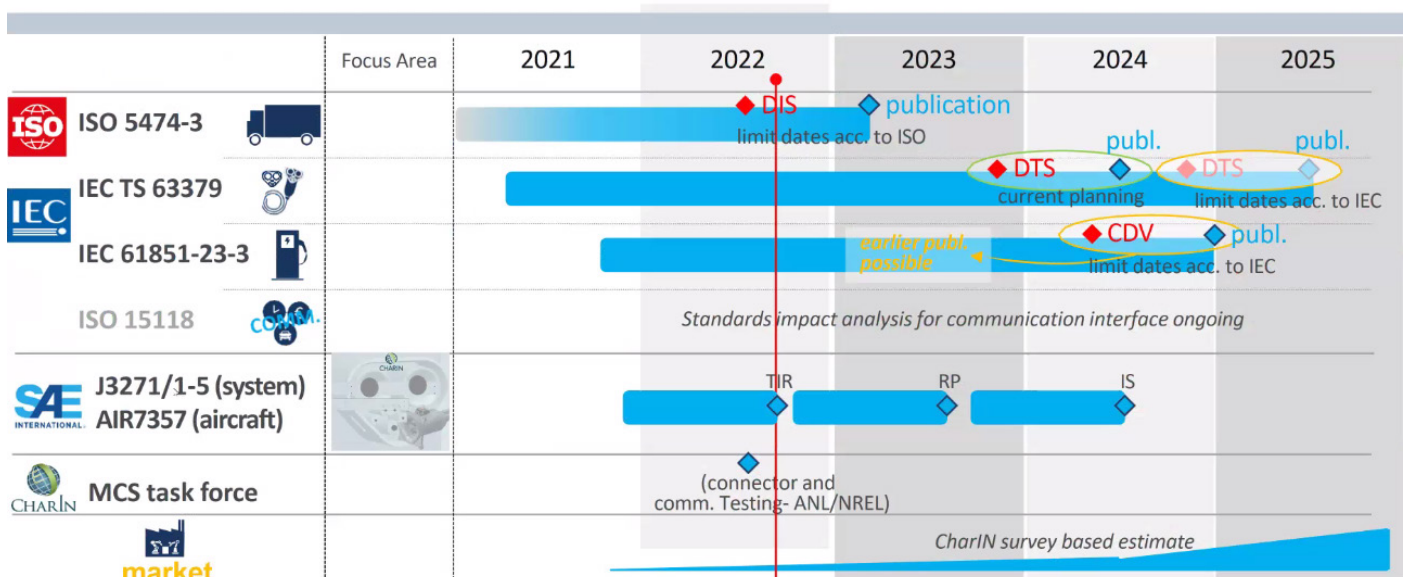
Mega-charging paves the way to a Co²-neutral mobility

MCS technology will enable Mega-charging for Heavy Duty Truck Transport, vessels and planes. It will have many fields of application, from commercial vehicles to the maritime industry, from agricultural and mining to aeronautics. (CHARIN)



MCS STANDARDIZATION ROADMAP

Timeline and key milestones of international groups involved in MCS standardization.



◆ End of commenting phase for DIS/ CDV/ DTS roughly 8 months before publication. DIS/ CDV/ DTS is the last stage that allows for technical changes.