

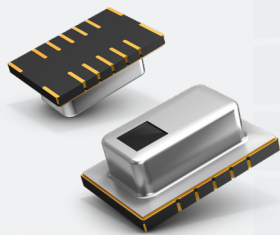
# Grid-Eye: Infrared Array Sensor

Thermal sensors for next generation of smart embedded applications

## WHERE DO WE OFFER ALTERNATIVES:

- Low-cost surface mount device in very small package (11.6mm x 8mm x 4.3mm)
- Package with 64 Thermopile MEMS pixels in 8x8 matrix, ASIC & integrated lens
- Digital readout of temperature data over I2C interface for simple integration
- Portfolio with multiple choices of lenses: 36°, 60° and 90° to address different use cases
- People tracking and counting algorithms for privacy enabled detection
- New evaluation platforms with collocated Grid-eye and camera to design machine learning based detection models

## GRID-EYE'S VALUE PROPOSITION:

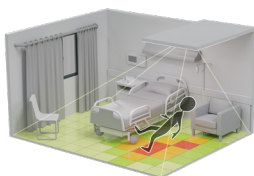


- ✓ Hot spot identification
- ✓ Moving and stationary detection
- ✓ Tracking and counting objects/people
- ✓ Area temperature measurement

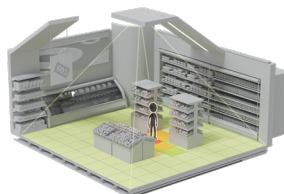
## 3 LENS TYPES TO TARGET DIFFERENT APPLICATIONS:

- **Narrow: 36°**
- **Standard: 60°**
- **Wide: 90°** **NEW!**

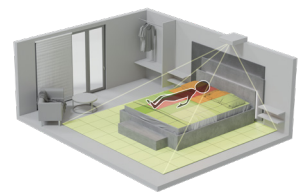
## TARGET APPLICATIONS:



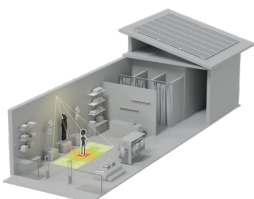
Hospital bed monitoring



Smart retail



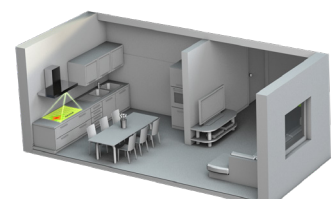
Room occupancy



Personalized lighting



Hot-desking



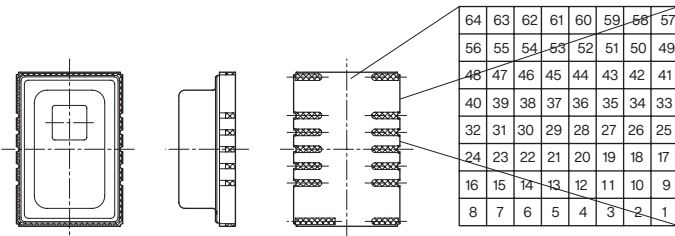
Stove guards

# Grid-Eye: Infrared Array Sensor

Thermal sensors for next generation of smart embedded applications

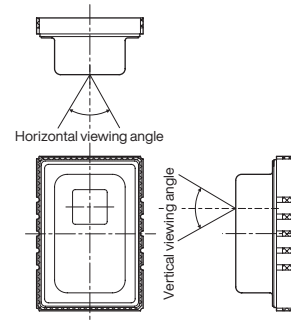
## 1. Pixel array

Pixel array from 1 to 64 is shown below.



## 2. Viewing field

Sensor viewing field (typical) is shown below.

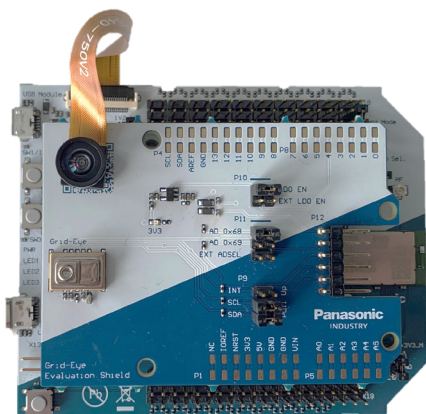


## ORDERING INFORMATION

Product Name	Type	Field of view	Amplification Factor	Operating Voltage	Part Number	Temperature of measured object
Grid-Eye	Narrow angle	35.6°	Low Gain	3.3V	AMG883642	-20 to 100°C
			High Gain	3.3V	AMG8833	0 to 80°C
	Standard angle	60°	Low Gain	5V	AMG8834	-20 to 100°C
			High Gain	5V	AMG8853	0 to 80°C
			Low Gain	5V	AMG8854	-20 to 100°C
	Wide angle <sup>†</sup>	90°	High Gain	3.3V	AMG883543	0 to 80°C
				5V	AMG885543	

<sup>†</sup>: Contact Panasonic for more details

## EVALUATION PLATFORM



### Grid-Eye Connectivity Kit

- Grid-Eye Shield in Arduino Form Factor
- Embedded Wi-Fi using PAN9520 Evaluation Board
- Possible to interface standard arduino camera (not provided by Panasonic)

### Simple setup for designing machine learning models

- Camera – Grid-Eye Combination to create aggregated datasets
- Possible to recover dataset over Wi-Fi channel
- Auto-annotation for people tracking & counting applications

Product Name	Wi-Fi	Grid-Eye Type	Order Code
Grid-Eye Connectivity Kit (Arduino style)	PAN9520	35.6 °	ENW49D01AWKF
		60°	ENW49D01AXKF
		90°	ENW49D01AYKF

## CONTACT

Panasonic Industry Europe GmbH  
[grideye@eu.panasonic.com](mailto:grideye@eu.panasonic.com)  
[industry.panasonic.eu](http://industry.panasonic.eu)

