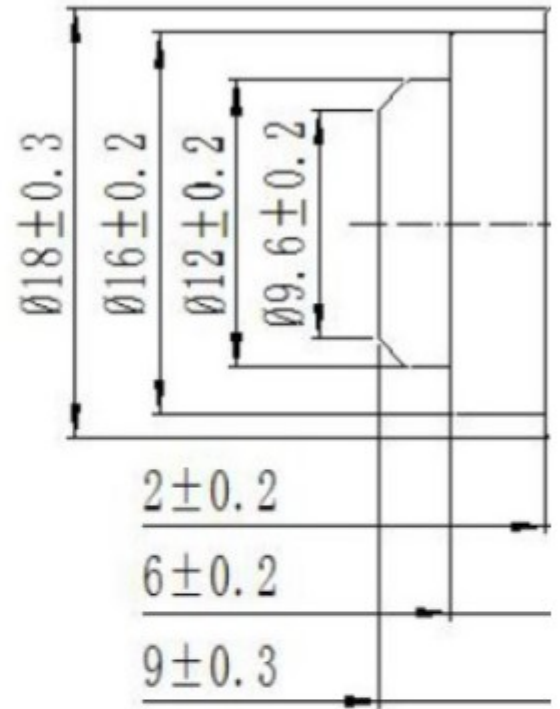
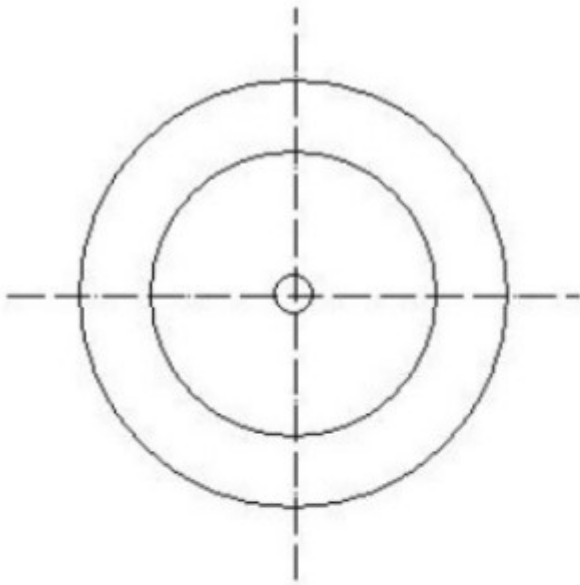


## Dimensions



## Specifications

Item	Specifications
Frequency	$225 \pm 15$ KHz
Overall Sensitivity	$\geq 120$ mVp-p
Beam Angle	$15^\circ$ (Typical)
Capacitance	$2200 \pm 20\%$ pF
Operating Temperature	$-20 \sim +70^\circ\text{C}$
Pressure Resistance	0.2Mpa