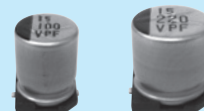


CE-PF Series

125°C Long Life

High Ripple Current



- 125°C 4,000hours
- Solvent proof (within 2 minutes)
- AEC-Q200

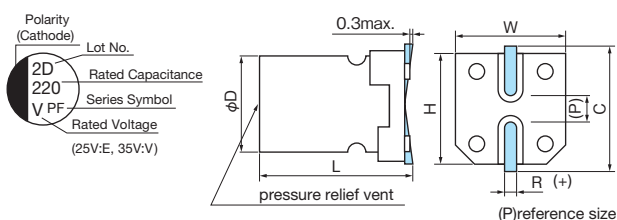
Specifications

Items	Condition	Specifications	
Rated voltage (V)	—	25	35
Surge voltage (V)	Room temperature	32	44
Category temperature range (°C)	—	-40 to +125	
Capacitance tolerance (%)	120Hz/20°C	M : ±20	
Dissipation Factor (tan δ)	tanδ (max.) 120Hz/20°C	0.16	0.14
Leakage current (LC)	µA/after 2minutes (max.), 20°C	0.01CV	
Impedance ratio at low temperature	Based on the value at 120Hz, +20°C	-25°C Z/Z _{20°C}	2
		-40°C Z/Z _{20°C}	3
Endurance	125°C, 4,000hours rated voltage applied (With the rated ripple current)	ΔC/C	Within ±30% of the initial value
		tanδ	Less than 300% of the specified value
		LC	Less than the specified value

 Surface Mount Type
 Aluminum Electrolytic Capacitors

 CE-LD
 CE-FSS
 CE-FS(High Voltage)
 CE-FS
 CE-AX
 CE-ZX
 CE-ZC
 CE-LX
 CE-GA
 CE-LS
 CE-LH
 CE-LH(High Voltage)
 CE-LL
 CE-LF
 CE-PC
 CE-PH
 CE-PS
 CE-PF
 CE-TH
 CE-JX
 CE-FN

Marking, Dimensions



(Unit : mm)

D ^{±0.5}	L ^{±0.3}	W ^{±0.2}	H ^{±0.2}	C ^{±0.2}	R	P
8	10.5	8.3	8.3	9.0	0.7 to 1.0	3.2
10	10.5	10.3	10.3	11.0	1.0 to 1.4	4.6

Size, ESR, Rated Ripple Current

µF	V	25			35		
100					8×10.5	0.30	300
150		8×10.5	0.30	300			
220					10×10.5	0.20	500
330		10×10.5	0.20	500			

Please refer to page 14 for ripple current frequency coefficients.

 ESR(Ω)
 max. at 100kHz, 20°C

 Rated ripple current
 mA rms(100kHz, 125°C)

Case size: φDxL(mm)

Part number

