

LED MODULE 2X6 IP STD

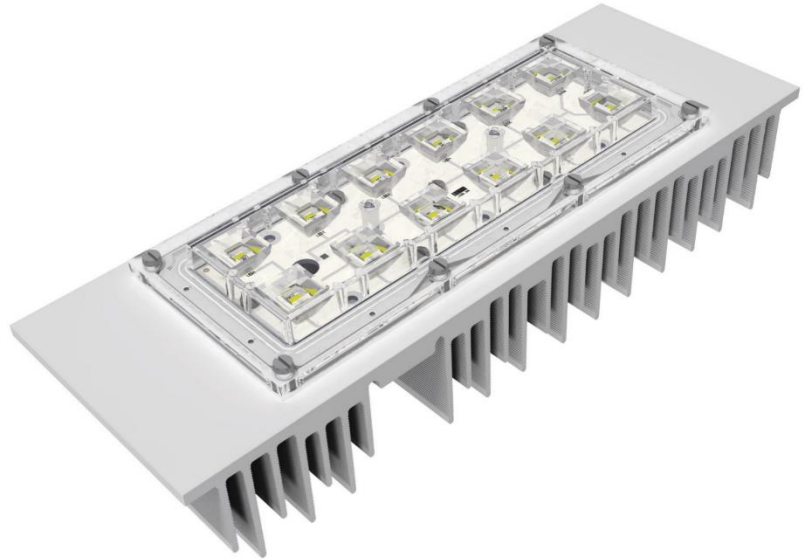
| | |
|------------|------------|
| Issue Date | Jul - 2017 |
| Issued by | Wilbur C. |

Applications

- Highbay
- Street Light
- Gas station
- Projectors
- Decorative Poles

Characteristics

- Module Efficacy – up to 158 lm/W
- L70 > 50.000 hours
- CRI > 80 (Typ.85)
- 03 SDCM
- CCTs 2.700K / 4.000K / 5.000K
- 05 years warranty



DRIVE CURRENTS

| Parameter | Nominal | Max |
|-----------------------|---------|----------|
| Led Module 2X6 IP STD | 700 mA | 1.250 mA |

MODULE TEMPERATURES

| Parameter | Nominal | Max |
|-----------------------------------|---------|-------|
| Tc (case temperature at Tc point) | 60 °C | 85 °C |

PRODUCT PART NUMBER

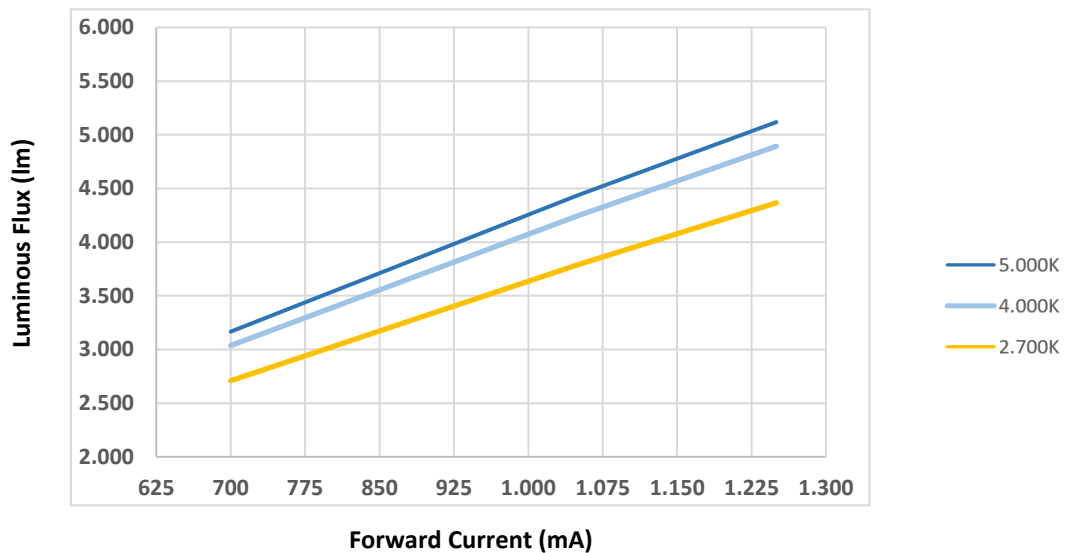
| ANGLE | 2.700 K | 4.000 K | 5.000 K |
|-----------------------|-------------|-------------|-------------|
| 97° | 80091400100 | 80091500100 | 80091600100 |
| 56° | 80091700100 | 80091800100 | 80091900100 |
| 13° | 80092000100 | 80092100100 | 80092200100 |
| 24° | 80092300100 | 80092400100 | 80092500100 |
| 137° | 80092600100 | 80092700100 | 80092800100 |
| Asymmetric Street | 80092900100 | 80093000100 | 80093100100 |
| Asymmetric Street 90° | 80093200100 | 80093300100 | 80093400100 |
| 31 + 116° | 80093200100 | 80093300100 | 80093400100 |

TECHNICAL INFORMATION

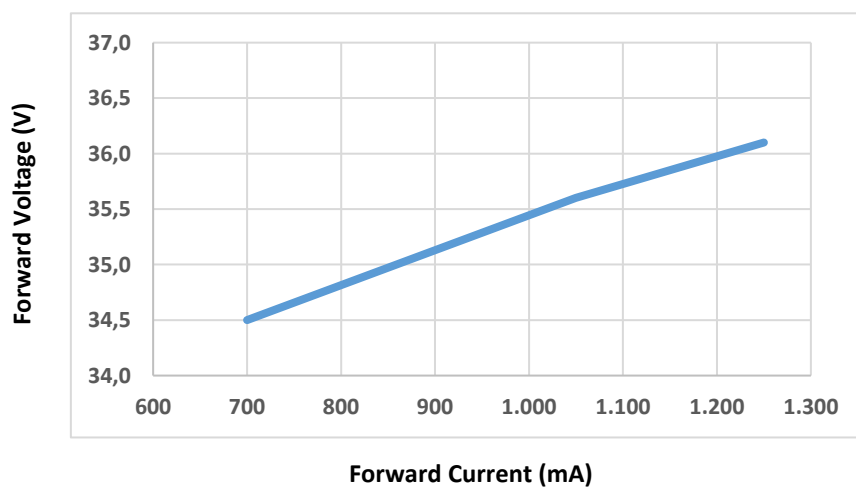
| CCT | LED Driver Current (mA) | # LEDs | Luminous Flux (lm)* | Forward Voltage (V) | LED Forward Current (mA) | TC (°C) | Power (W) | Efficacy (lm/W)* |
|---------|-------------------------|--------|---------------------|---------------------|--------------------------|---------|-----------|------------------|
| 2.700 K | 700 | 12 | 2.709 | 34,5 | 700 | 60 | 24,1 | 112 |
| 2.700 K | 1.050 | 12 | 3.789 | 35,6 | 1.050 | 60 | 37,6 | 101 |
| 2.700 K | 1.250 | 12 | 4.366 | 36,1 | 1.250 | 60 | 45,1 | 97 |
| 4.000 K | 700 | 12 | 3.036 | 34,5 | 700 | 60 | 24,1 | 126 |
| 4.000 K | 1.050 | 12 | 4.246 | 35,6 | 1.050 | 60 | 37,6 | 113 |
| 4.000 K | 1.250 | 12 | 4.893 | 36,1 | 1.250 | 60 | 45,1 | 108 |
| 5.000 K | 700 | 12 | 3.166 | 34,5 | 700 | 60 | 24,1 | 131 |
| 5.000 K | 1.050 | 12 | 4.436 | 35,6 | 1.050 | 60 | 37,6 | 118 |
| 5.000 K | 1.250 | 12 | 5.118 | 36,1 | 1.250 | 60 | 45,1 | 113 |

TECHNICAL GRAPHS

Luminous Flux (lm) x Forward Current (mA) (TC 60°C)



Forward Voltage (V) x Forward Current (mA) (TC 60°C)

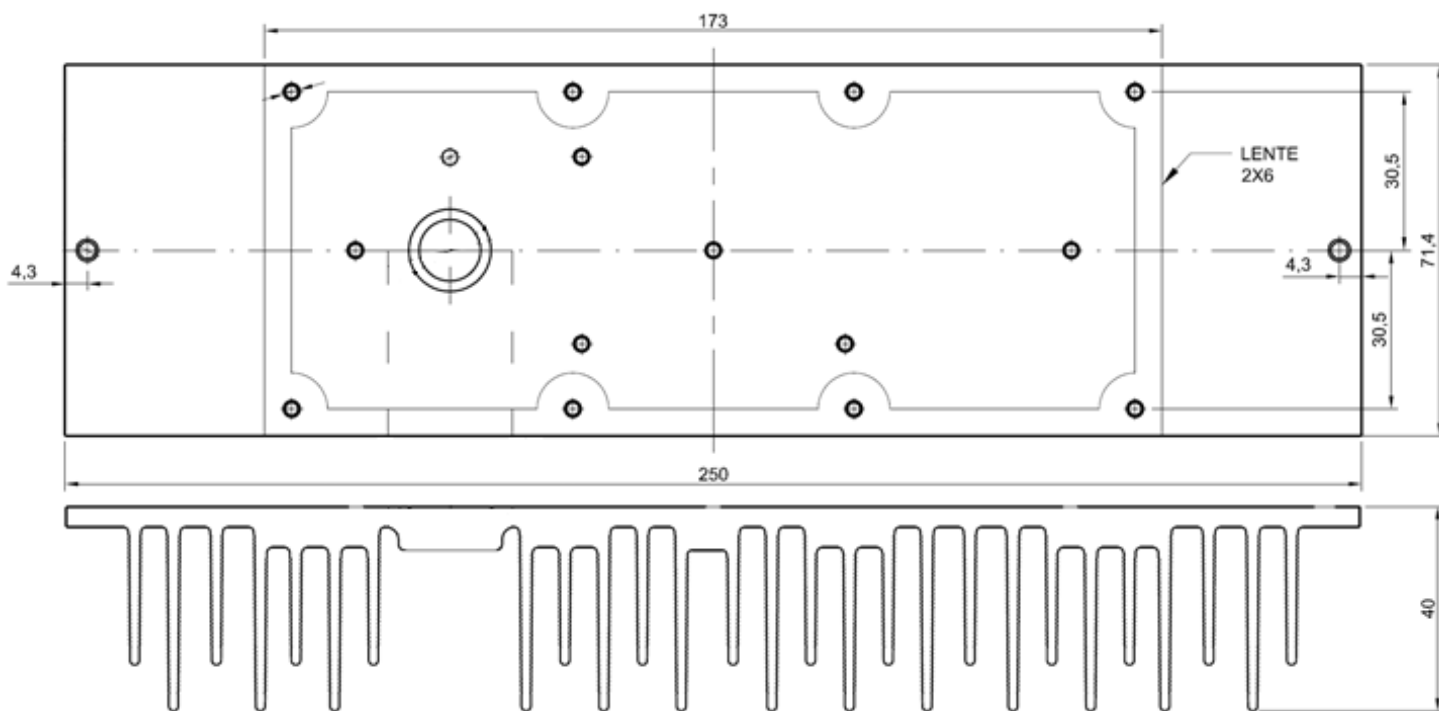


LED TYPE

Manufacturer: Nichia Corporation

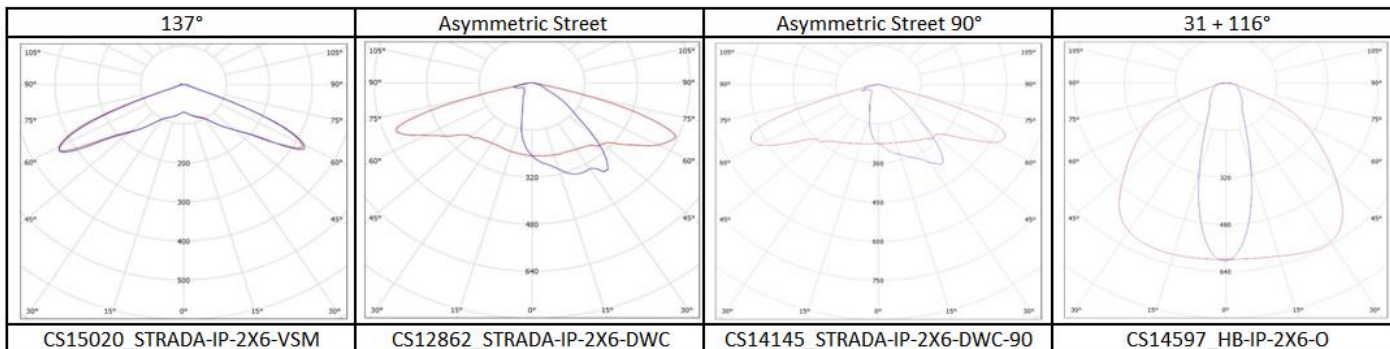
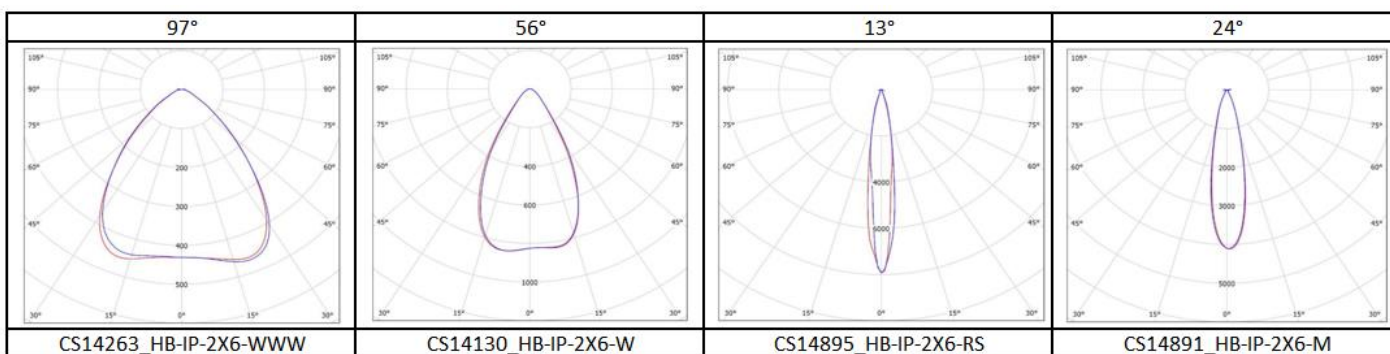
LED Series: 757

MECHANICAL DRAWING



Unit: mm

COMPATIBLE OPTICS



WIRING

| Specification item | Value | Unit | Condition |
|---------------------------|------------------------|------------------------|------------------|
| Input wire cross- section | 0.25...0.75 18...24 | mm ² AWG | Solid wire |
| Input wire strip length | 7.5...8.5 | mm | Solid wire |
| Input wire cross-section | 0.33...0.5 20...22 | mm ² AWG | Stranded wire |
| Input wire strip length | 7.5...8.5 | mm | Stranded wire |