

2J0202-C75G

2.4/5.0 GHz ISM Connector Mount

Key Features

2.4/5.0 GHz ISM

- 2410-2490 MHz

- 4920-5925 MHz

Connector Mount

Ground Plane Dependent

High Gain

Small Form Factor

Dimensions \varnothing 12.5 × 34.7 mm



1. Antenna and electrical specifications

Parameters	2.4/5.0 GHz ISM Antenna	
Standards	WiFi, BT, ZigBee, ISM	
Band (MHz)	2.4 GHz	5.0 GHz
Frequency (MHz)	2410-2490	4920-5925
Return Loss (dB)	~-13.3	~-4.6
VSWR	~1.6:1	~4.3:1
Efficiency (%)	~67.7	~31.0
Peak Gain (dBi)	~3.1	~-0.2
Average Gain (dB)	~-1.7	~-5.2
Impedance (Ohm)	50	
Polarisation	Linear	
Radiation Pattern	Omni-Directional	
Max. Input Power (W)	25	
Connector Type	SMA Male RP	

Antenna Measurement Conditions:

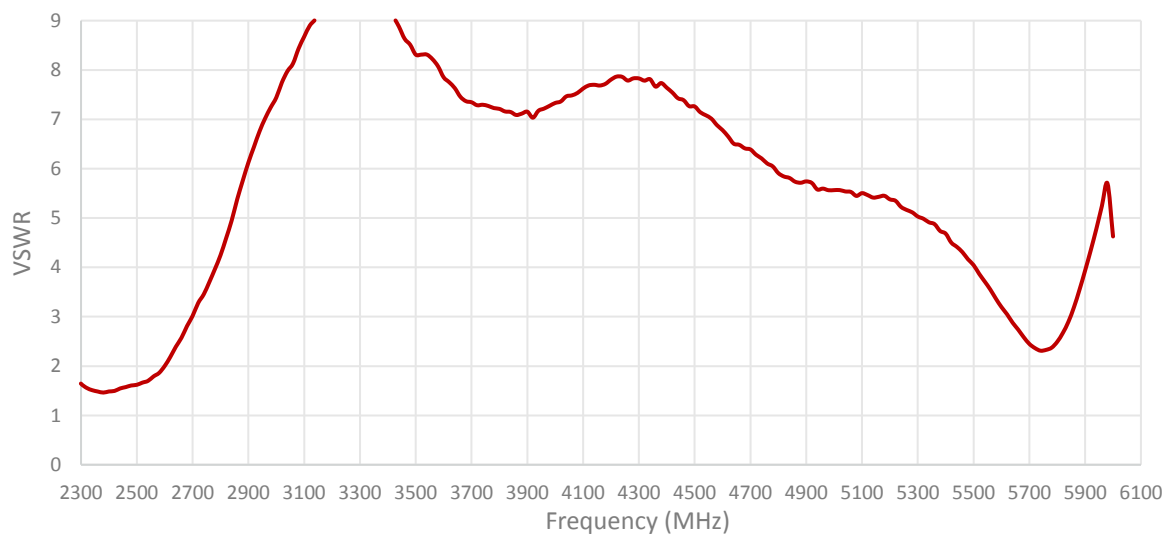
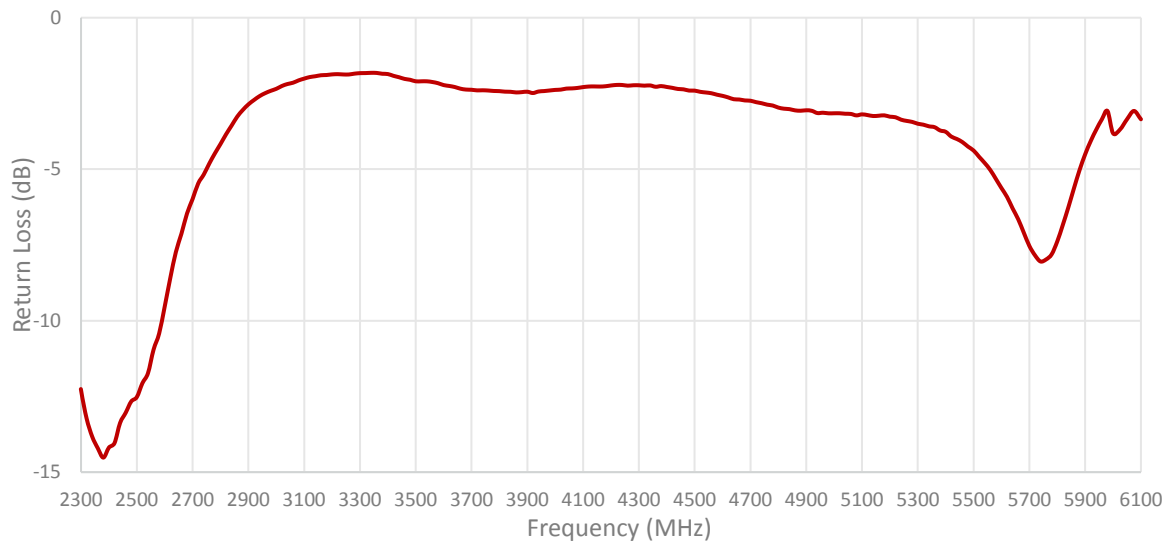
Mounted on ground plane of 70 × 35 mm

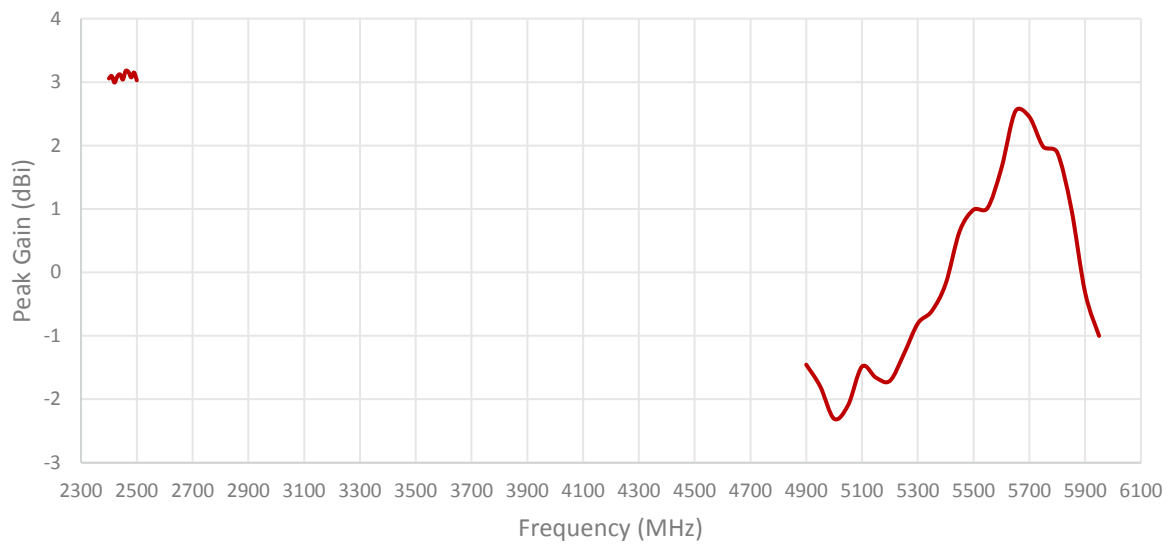
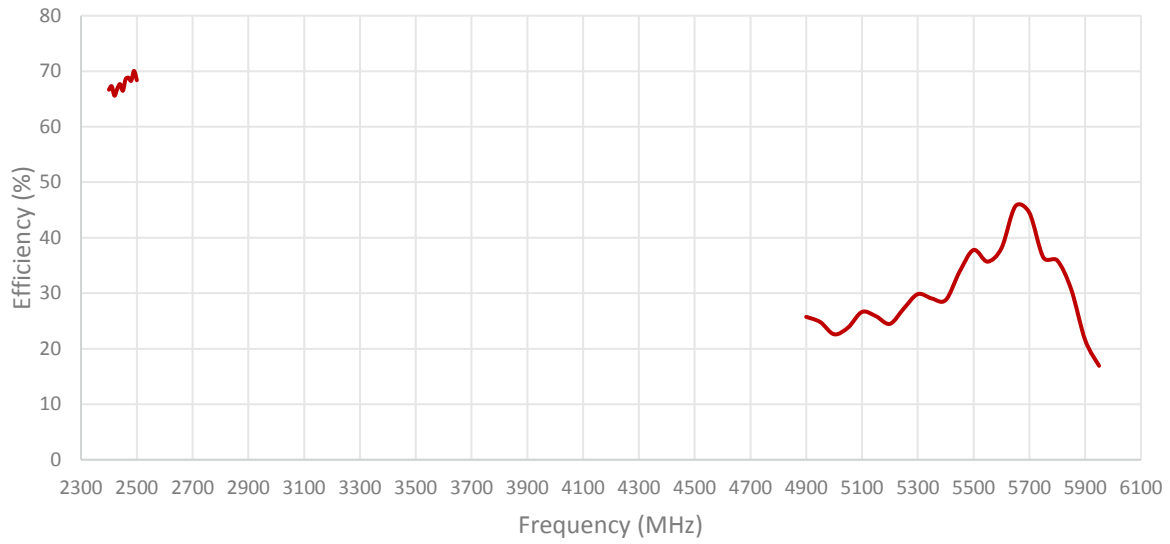
Measured in Certified CTIA 3D Anechoic Chamber

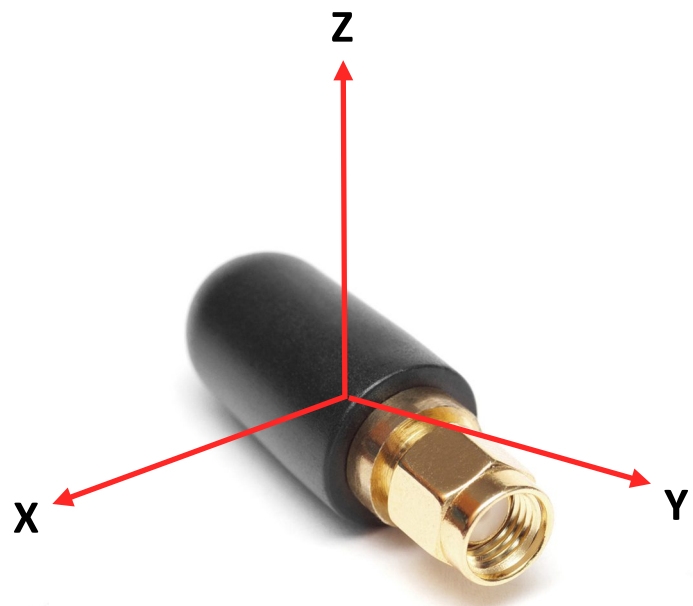
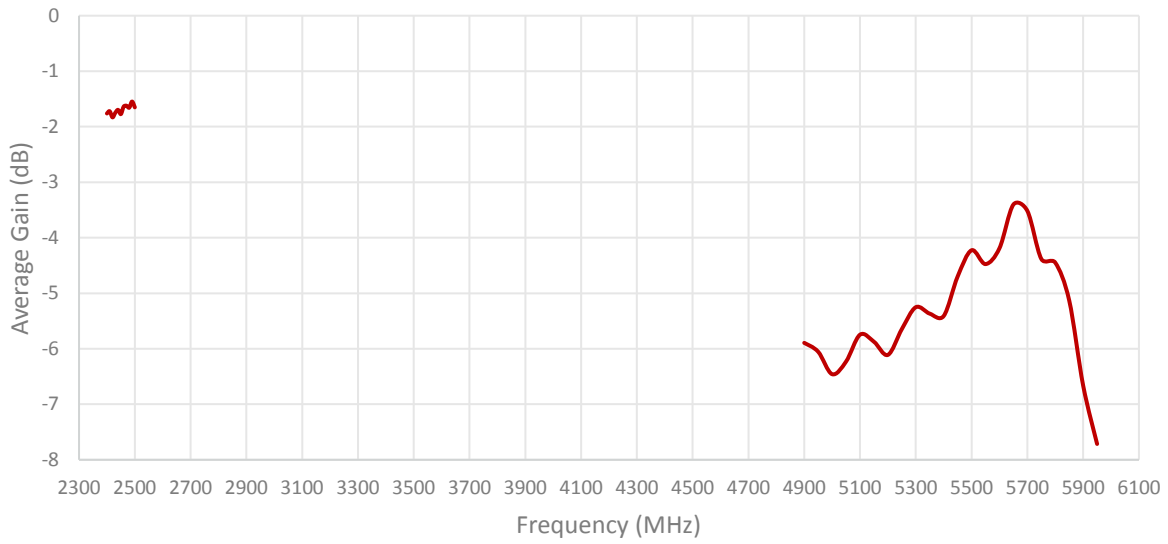
2. Mechanical and environmental specifications

Specifications	2J0202-C75G
Mounting Type	Connector Mount
Dimensions (mm)	Ø 12.5 × 34.7
Radome Type	ASA
Radome color	Black
Operating Temperature (C)	-40 to +85
Storage Temperature (C)	-40 to +85
Substance Compliance	RoHS

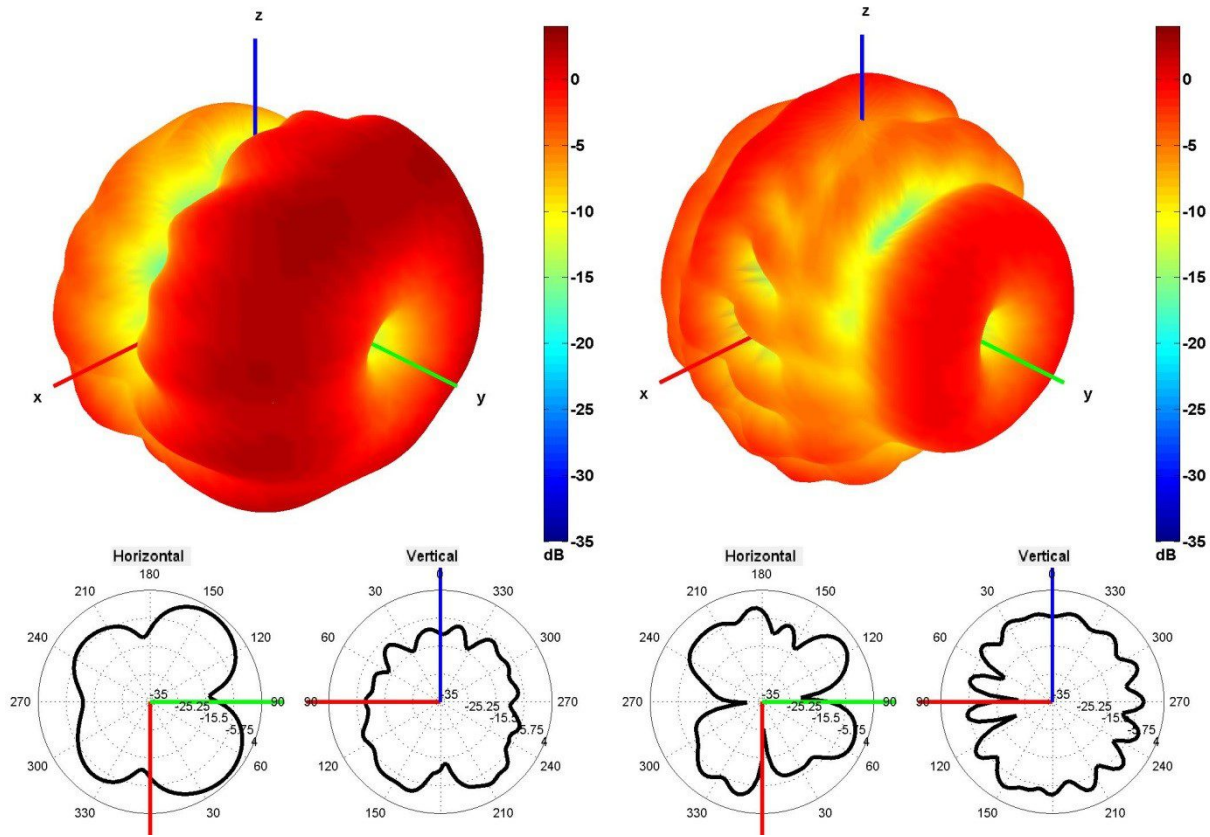
3. Antenna parameters







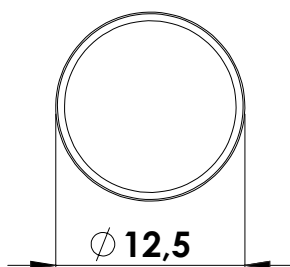
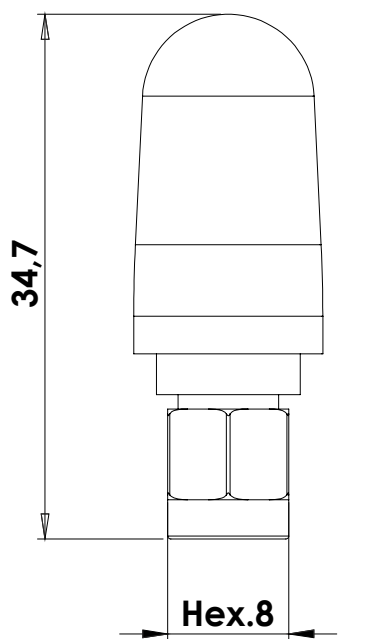
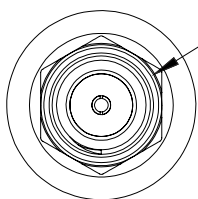
Radiation pattern reference



2450 and 5500 MHz Radiation pattern

4. Antenna drawings

SMA Male RP, Straight, Gold Connector



5. Antenna Images

