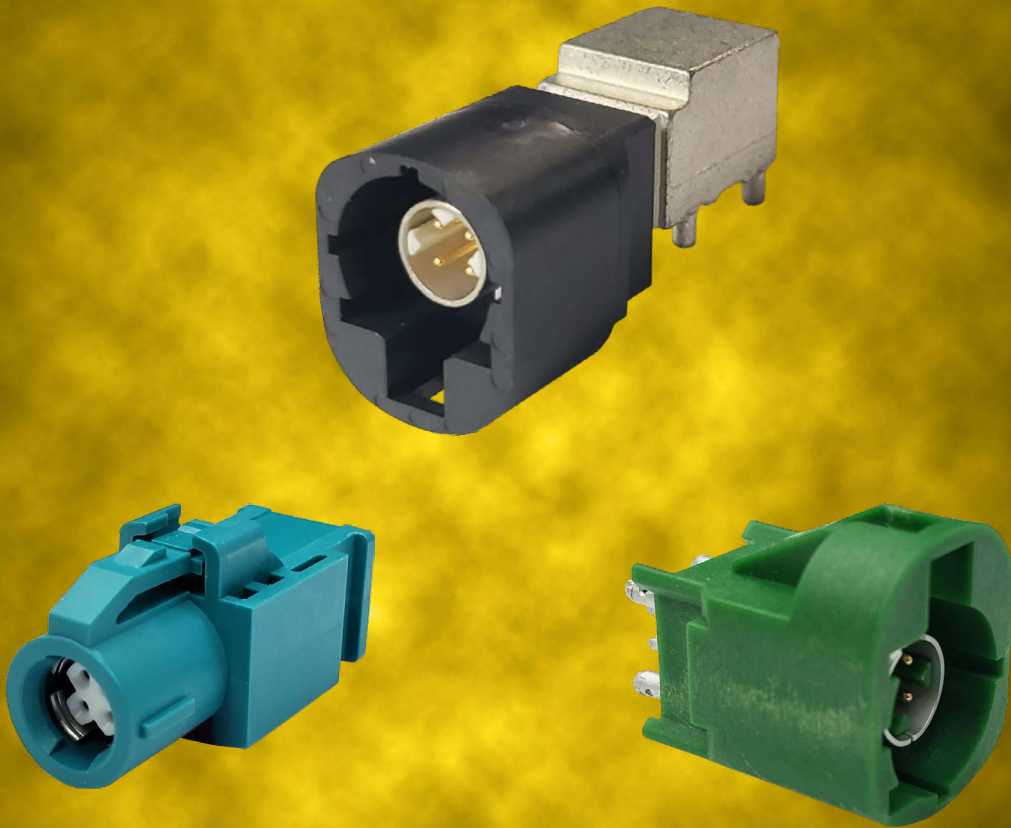
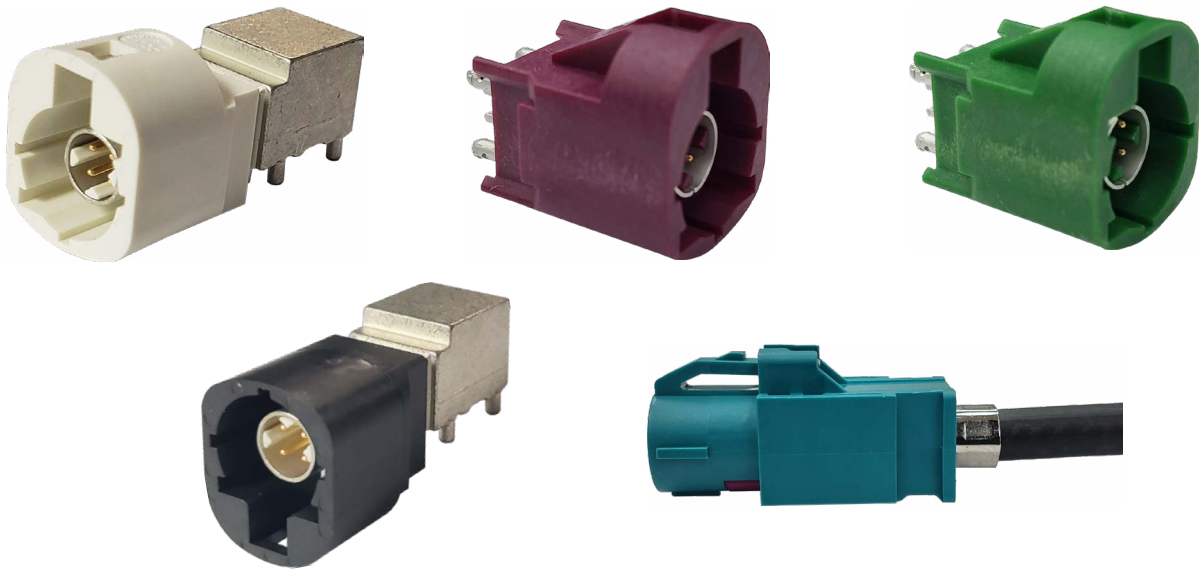


ADAME TECH



HIGH SPEED DATA FAKRA
(HSD SERIES)



Adam Tech enhances its FAKRA (Fachkreis Automobil) series with its High Speed Data FAKRA connectors. One pin FAKRA connectors are no longer adequate for applications that require higher data transmission rates. HSD FAKRA four pin connectors meet those demands with their 100 ohm impedance-controlled system, offering high speeds and top-quality signal transmission. These high speed connectors are designed to satisfy RF requirements in various telematic and multimedia applications. They provide high performance, cost effective RF interface to FAKRA and USCAR standards. Their SMB based design includes multiple color-coded plastic housings to ensure accurate connections, as well as to meet automotive specifications. Adam Tech's HSD FAKRA connectors are ideal for automotive applications and are designed to meet the operational and environmental requirements of Satellite Digital Audio Radio Service (SDARS), Global System for Mobile Communications (GSM), and Global Positioning System (GPS).

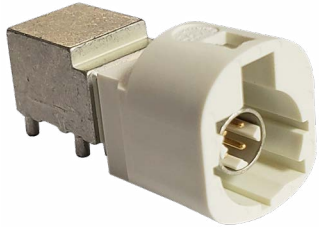
APPLICATIONS:

- Automotive
- GPS
- Bluetooth
- Keyless entry
- Telematics
- Outdoor routers
- Satellite radios
- Infotainment systems
- Medical devices
- Machines with RF interfacing
- High tech applications
- Harsh environment

FEATURES AND BENEFITS:

- High speed data transmission rates up to 6 Gbps
- Frequency: DC up to 2.0 GHz
- 100 ohm differential impedance
- 4 pins
- Color-coded mechanical layouts
- Locking feature
- Selective gold plating
- Shielded for EMI/RFI protection
- Multiple connector configurations including straight, right angle, and cable mount
- RoHS compliant

HSD-04X-S-PRA-SG-C1-TR



Right Angle PCB Plug

HSD-04X-S-PRB-SG-C1-TR



Right Angle PCB Plug (Reverse)

HSD-04X-S-PT-SG-C1-TR



Straight PCB Plug

HSD-04X-S-SD-SG-C4



Solder Cable Socket

SPECIFICATIONS:

Material:

Plugs:

Insulator: PA

Contacts: Brass

Outer contacts: Zinc alloy

Sockets:

Insulator: PBT, rated UL 94V-0

Contacts: Phosphor bronze

Contact sleeve: Phosphor bronze

Outer contacts: Brass

Contact Plating:

Contact area: Selective gold plated

Solder tails area: Tin plated

Electrical:

Impedance, differential mode: 100 Ω differential

signaling, for one pair or quad cable shielded

Frequency: DC to 2.0 GHz

Return loss: ≥ 20 dB to 1.0 GHz or ≥ 17 dB to

2.0 GHz

Insertion loss: ≤ 0.1 dB @ 1.0 GHz

Insulation resistance: 1000 MΩ

Signal contact resistance: 10 mΩ

Mechanical:

Mating cycles: ≥ 25 cycles

Engagement force: ≤ 30N

Disengagement force: ≥ 5N

Retention force latch: ≥ 110N

Coding efficiency: ≥ 80N

Temperature Rating:

Operating temperature range: -40°C to +105°C

Code (X)	Applications	Color/RAL	
A	Radio without phantom supply	Jet Black / 9005	
B	Radio with phantom supply	Cream White / 9001	
C	GPS: telematics or navigation	Signal Blue / 5005	
D	GSM	Claret Violet / 4004	
E	TV1 / SDARS	Leaf Green / 6002	
F	TV2 / SDARS	Nut Brown / 8011	
G	Remote keyless entry	Blue Gray / 7031	
H	GPS: telematics and navigation	Heather Violet / 4003	
J	Bluetooth / controlled parking / heating	Beige / 1001	
K	Radio with IF	Curry / 1027	
L	Not defined	Yellow Green / 6018	
M	Not defined	Pastel Orange / 2003	
O	Not defined	Light Green / 6027	
Z	Neutral coding	Water Blue / 5021	

ADAM TECH

ADAM TECH USA

(WORLDWIDE HQ)

909 Rahway Ave.

Union, NJ 07083

U.S.A.

Tel: 908-687-5000

Fax: 908-687-5710

Email: info@adam-tech.com

ADAM TECH EUROPE

Marcel Schwob

Karlsruhe, Germany

Email: info@adam-tech.com

ADAM TECH SOUTH AMERICA

Cesar Nakajune

Sao Paulo, Brazil

Email: info@adam-tech.com

ADAM TECH TAIWAN

9F-3, No. 10, Lane 609, Sec. 5, Chongxin Rd.

Sanchong Dist., New Taipei City 241

Taiwan (R.O.C.)

Tel: 886-2 2999 8028

Fax: 886-2 2999 8062

Email: info@adam-tech.com

ADAM TECH CHINA

Yingfeng 1st Road, Dajingtou Community

Dalang Town, Dongguan City

Guangdong Province

China (P.R.C.)

Tel: 886-2 2999 8028

Fax: 886-2 2999 8062

Email: info@adam-tech.com

To contact us, scan the QR
code to reach our website
inquiry form.



adam-tech.com