



GREG9 120x62R

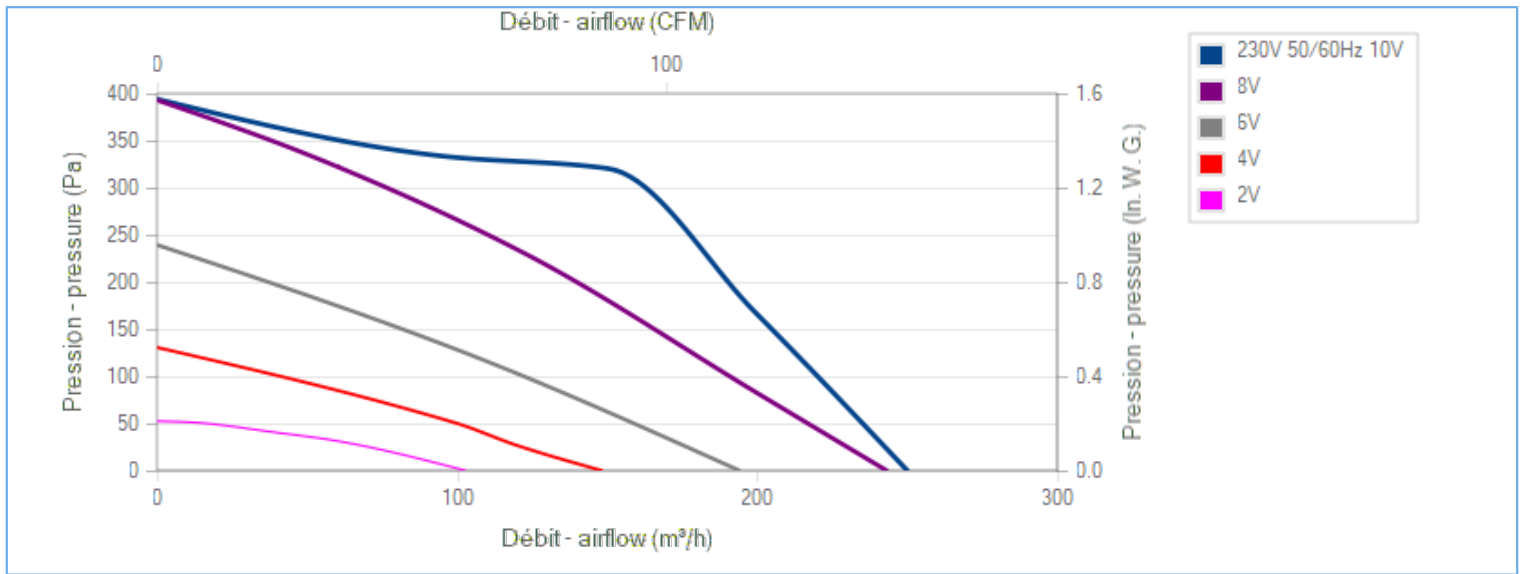
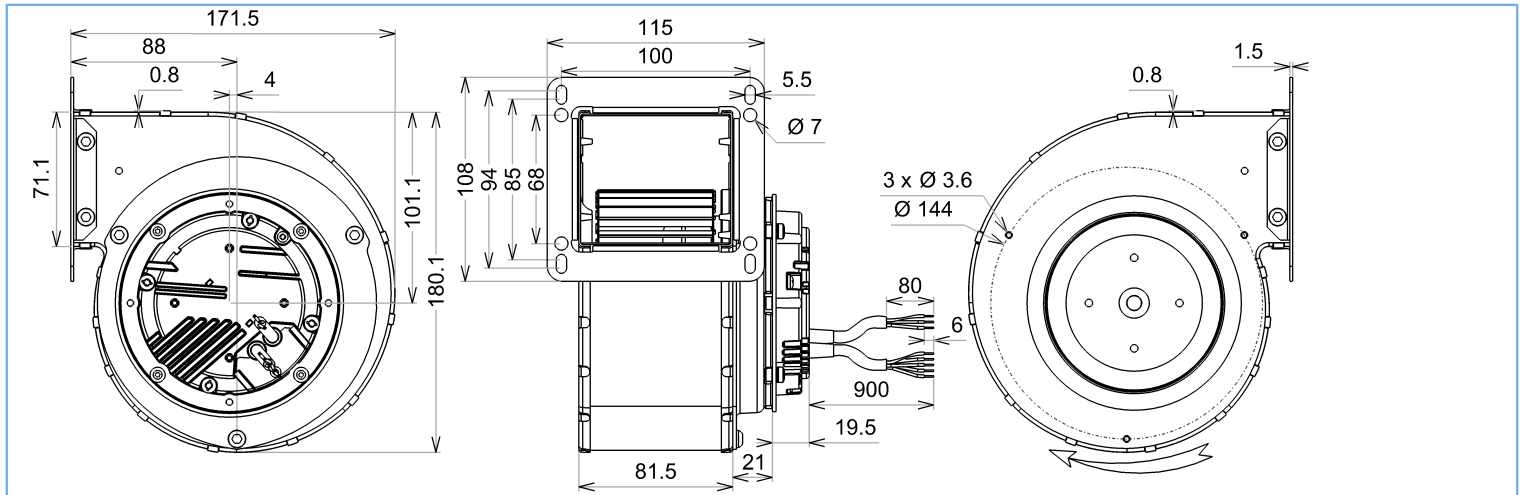
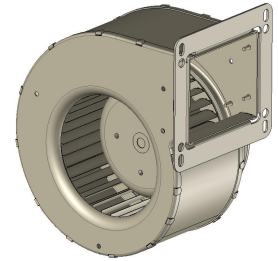
N10-A6-1



DATA SHEET

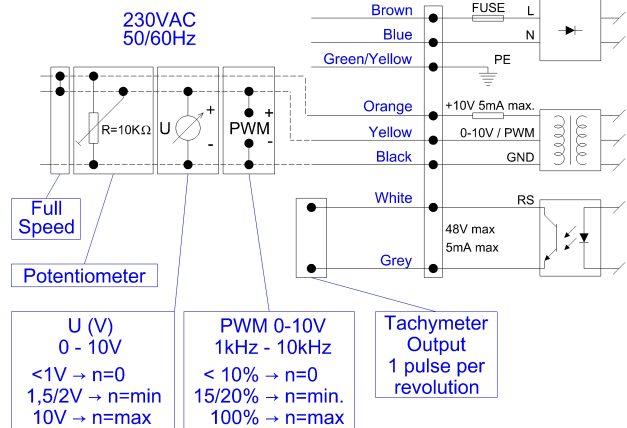
release. i - Revision 03-2019

Voltage	Frequency	Input Power	Input Current	Airflow	Rotation speed	Acoustic level	Direction rotation	Admissible Temperature
V	Hz	W	A	m ³ /h	RPM	dBA	↻	Min/Max
230	50/60	25	0,23	250	1700	53	R	-20°C / +50°C
230	50/60	147 CFM						
							ErP 2013	ErP 2015
							NA	NA



Description

- .Weight : 2,3 Kg
- .Ball bearing
- .Insulation Class F
- .IP4x may be IP44 according to EN60034-5 after checking the integration into the customer appliance
- .G2.5 balancing
- .Rotor : black paint
- .Scroll housing : black paint



Non contractual document. All specifications are subject to change without prior notice. Picture for information only.



GREG9 120x62R

N10-A6-1



DATA SHEET

release. i - Revision 03-2019

Data in accordance to ErP directive

Voltage	230	V
Frequency	50	Hz
Power	0,041	kW ⁽¹⁾
Airflow	150	m ³ /h ⁽¹⁾
Pressure	320	Pa ⁽¹⁾
Rotation speed	2867	RPM ⁽¹⁾

(1) at optimal efficiency point

ErP directive (EU 2009/125/EC) not applicable :
Power at optimum energy efficiency point

Accessories

21236

Measurement setup

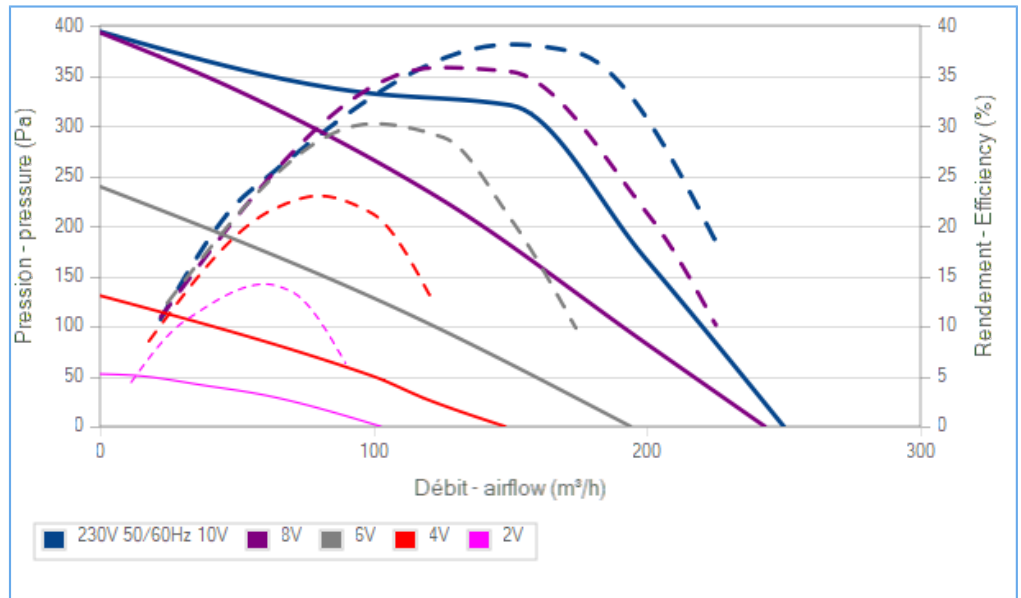
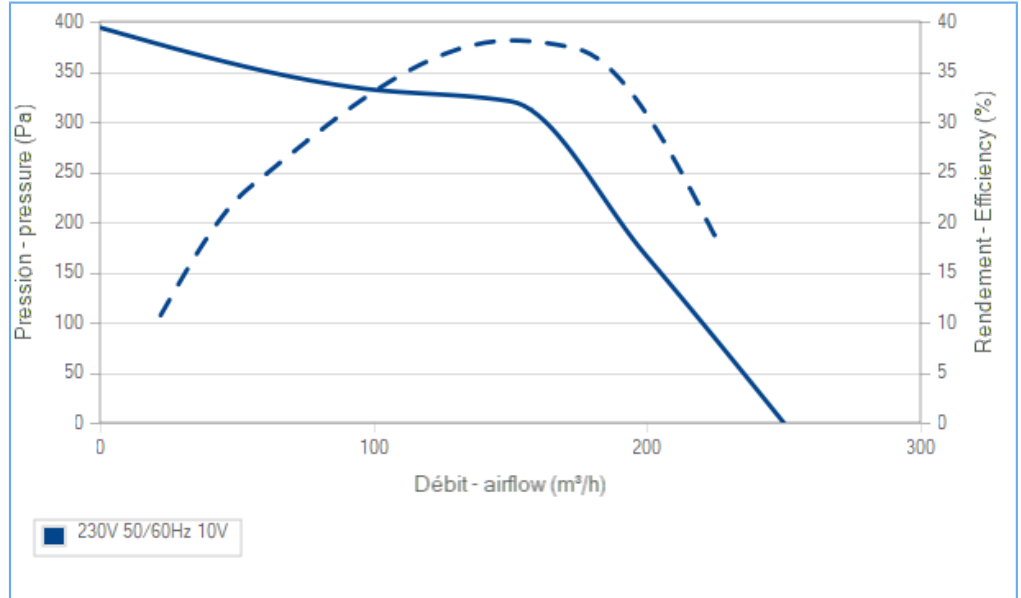
Contact ECOFIT

Documents

- Manuel d'utilisation
www.ecofit.com/site/normes
- Operating and recycling manual
www.ecofit.com/anglais/normes



IEC 60335-2-80:2002 + A1:2004 +
IEC 60335-1:2010
EN 60335-2-80:2003 + A1:2004 + A2:2009 +
EN 60335-1:2012
RT9192CE



La courbe de rendement intègre le facteur de compensation de charge partielle du règlement (UE) n°327/2011
The efficiency curve includes part load compensation factor of regulation (EU) n°327/2011

Non contractual document. All specifications are subject to change without prior notice. Picture for information only.