



4TREu35 180x75R

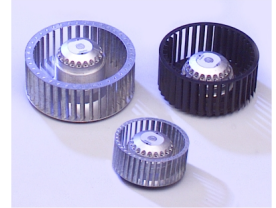
C45-C3 p



DATA SHEET

release. d - Revision 01-2016

Voltage	Frequency	Input Power	Input Current	Capacitor	Airflow	Rotation speed	Acoustic level	Direction rotation	Admissible Temperature
V	Hz	W	A	µF	m³/h	RPM	dBA		Min/Max
230	50	106	0,47	3,0	600	1115	56	R	-40°C / +70°C
230	60	115	0,51	2,5	590	1110	56	R	-40°C / +70°C
230	50				353 CFM				-40°F / 158°F
230	60				347 CFM				-40°F / 158°F



dBA : free blowing

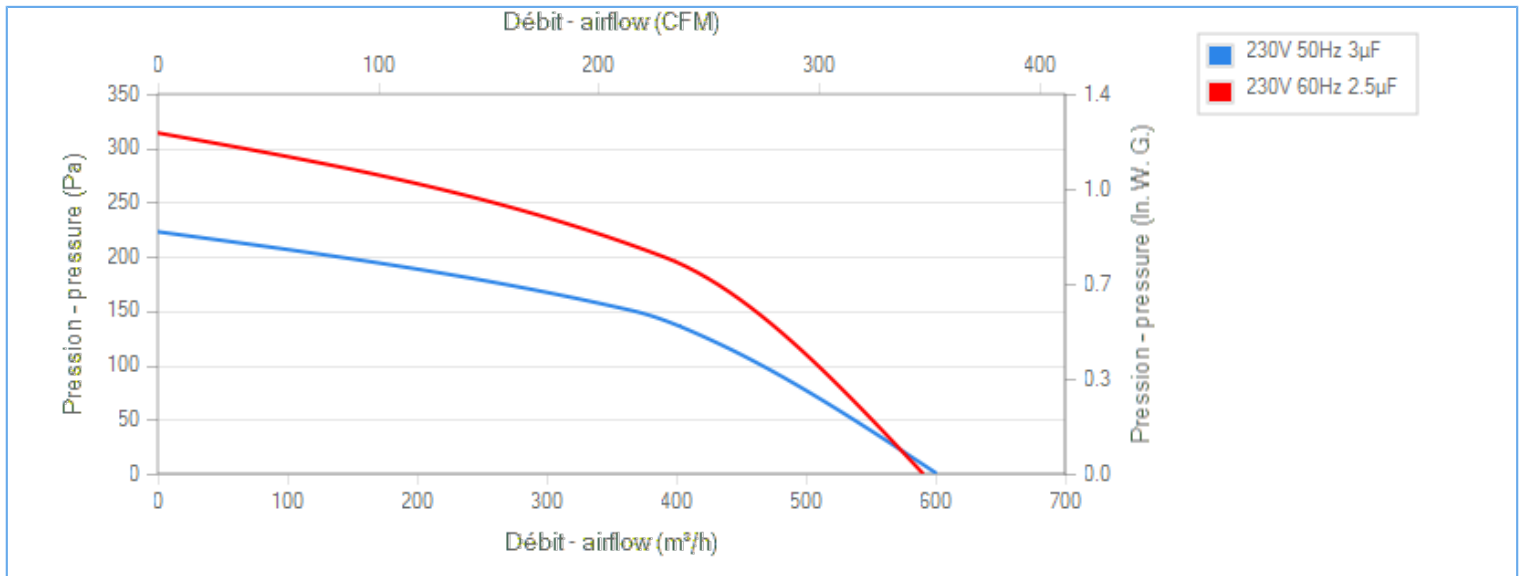
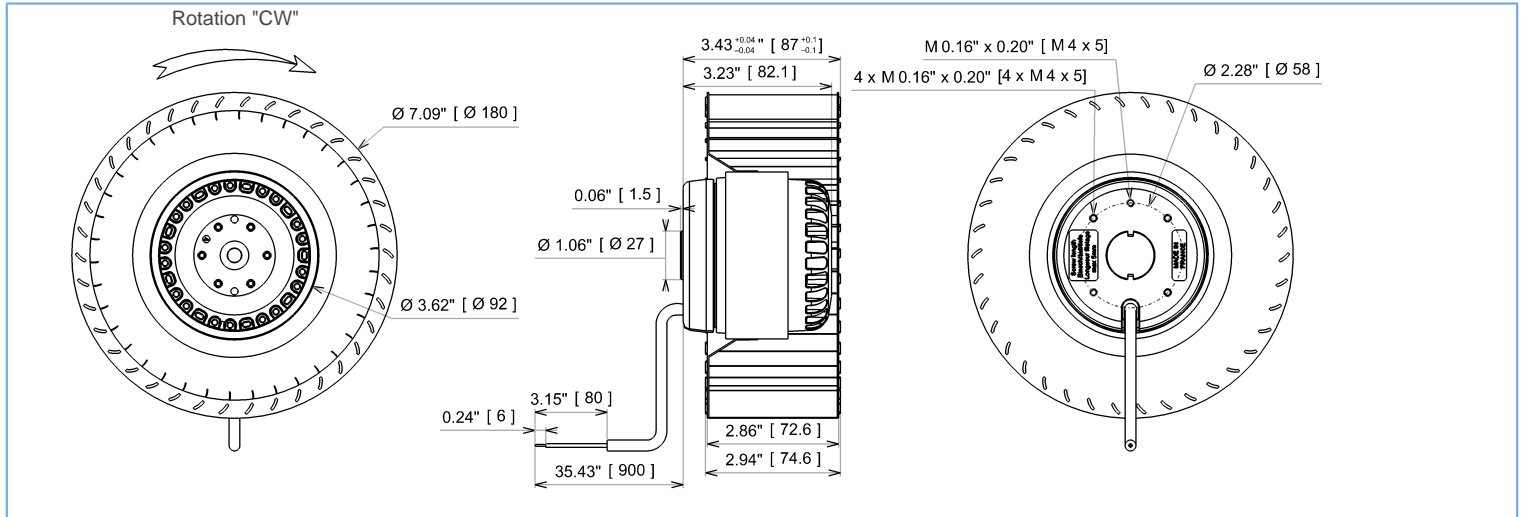
NA : not applicable

ErP 2013

NA

ErP 2015

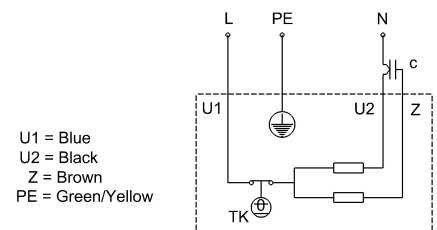
NA



Tested with ECOFIT housing

Description

- .Weight : 2,1 Kg
- .Ball bearing
- .Class F, thermally protected
- .IP44 protection depending on installation and position as per EN60034-5
- .G2.5 balancing
- .Galvanized steel impeller
- .Rotor : black paint
- .Motor - UL Recognized component



Non contractual document. All specifications are subject to change without prior notice. Picture for information only.



4TREu35 180x75R

C45-C3 p



DATA SHEET

release. d - Revision 01-2016

Data in accordance to ErP directive

Voltage	230	V
Frequency	50	Hz
Power	0,090	kW ⁽¹⁾
Airflow	367	m ³ /h ⁽¹⁾
Pressure	150	Pa ⁽¹⁾
Rotation speed	1289	RPM ⁽¹⁾

(1) at optimal efficiency point

ErP directive (EU 2009/125/EC) not applicable :
Power at optimum energy efficiency point

Accessories

- 19219
- 19218
- 21194
- 16133

Measurement setup

Contact ECOFIT

Documents

Manuel d'utilisation
www.ecofit.com/site/normes

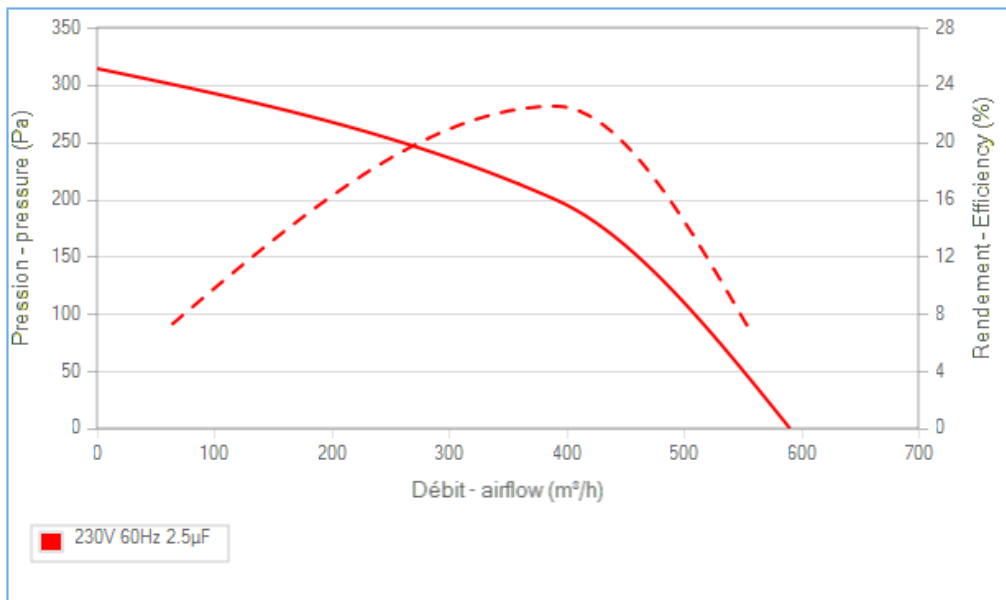
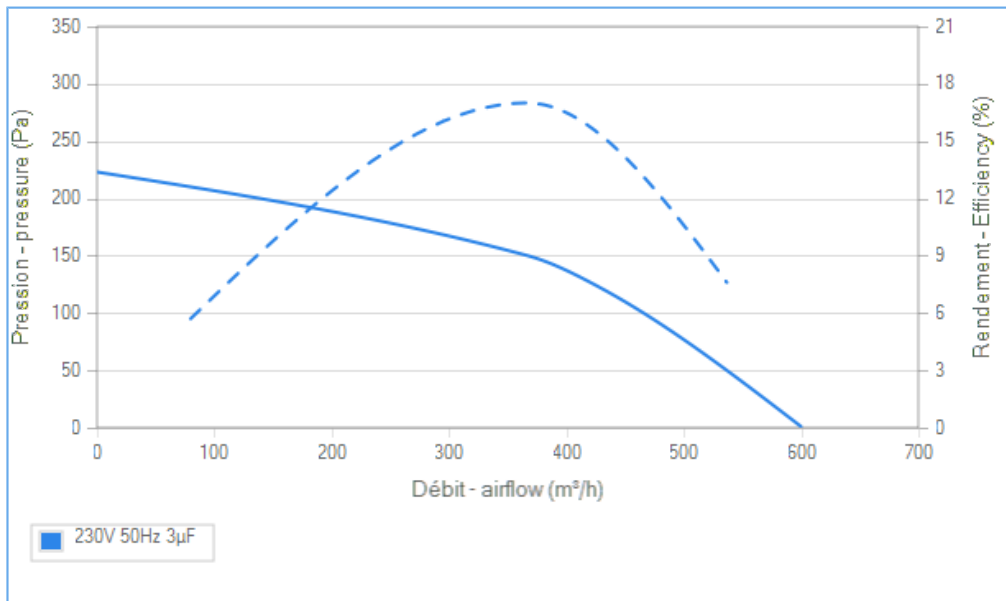
Operating and recycling manual
www.ecofit.com/anglais/normes



UL2111 (XEWR2,8)
N° file E135223
4RS935



A041865
4RS935CN



Non contractual document. All specifications are subject to change without prior notice. Picture for information only.